

Building Specifications

Location: 1320 C of E Drive, City of Emporia, Lyon County, Kansas.

Size: 36,000 square foot

Present Use: Empty.

Land: 1.54 acres.

Zoning: C1 office and service Commercial

Enterprise Zone: Yes

Features: Built in 1968, masonry/brick construction. Three floors in the building. Building is air conditioned with a small parking lot and street parking.

Transportation

Highways: I-35, Highways 50 and 99 and the Kansas Turnpike is within one mile of building.

Air Service: Emporia Municipal Airport with general aviation service located south of Emporia six miles.

Utilities

Electricity: Western Resources/KPL
For rate information contact Sandy Brink at 1-800-826-0026.

Natural Gas: Western Resources/KPL
7/8" CTS Plastic line to building.

Water: City of Emporia 2" water main.

Sanitary Sewer: City of Emporia
8" main on Chestnut Street serves the area.

Other Information

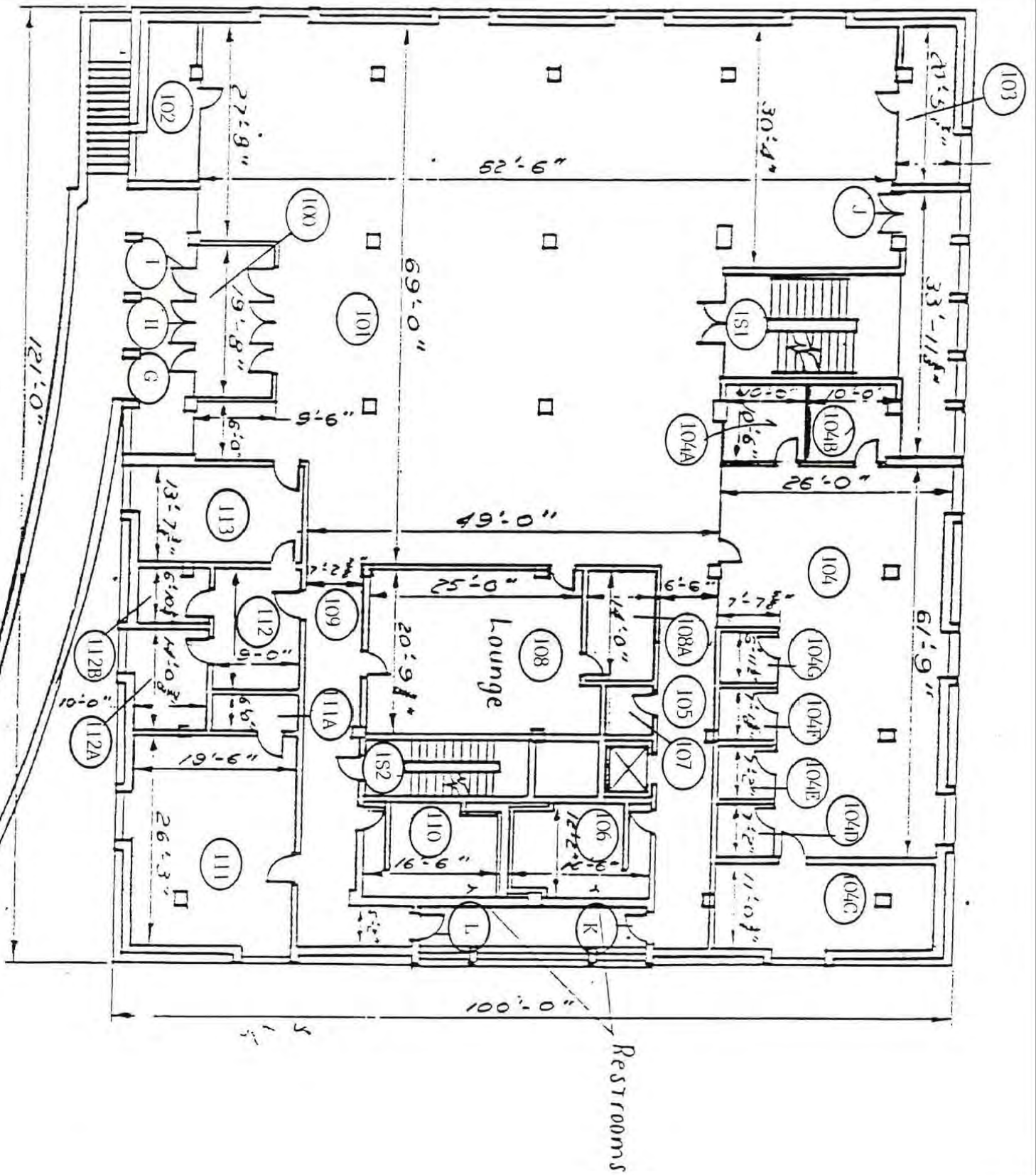
Terms: Lease annualized base \$6 sq. ft. triple-net, lease/purchase or purchase. Purchase price \$500,000

Owner: National Teacher's Hall of Fame
Elvin Perkins, Chair of the Board
620-342-1883

Other Contacts:
Kent Heermann, President
Regional Development Association of
East Central Kansas
719 Commercial
Emporia, Kansas 66801
620-342-1600 x 16
620-342-3223 Fax
kheermann@emporiakschamber.org



First Floor Plan



Emporia State University

Hall of Fame

First Floor Plan

1200 Commercial St., Emporia, Kansas 66801
tel. 620-341-5331, fax 620-341-5094

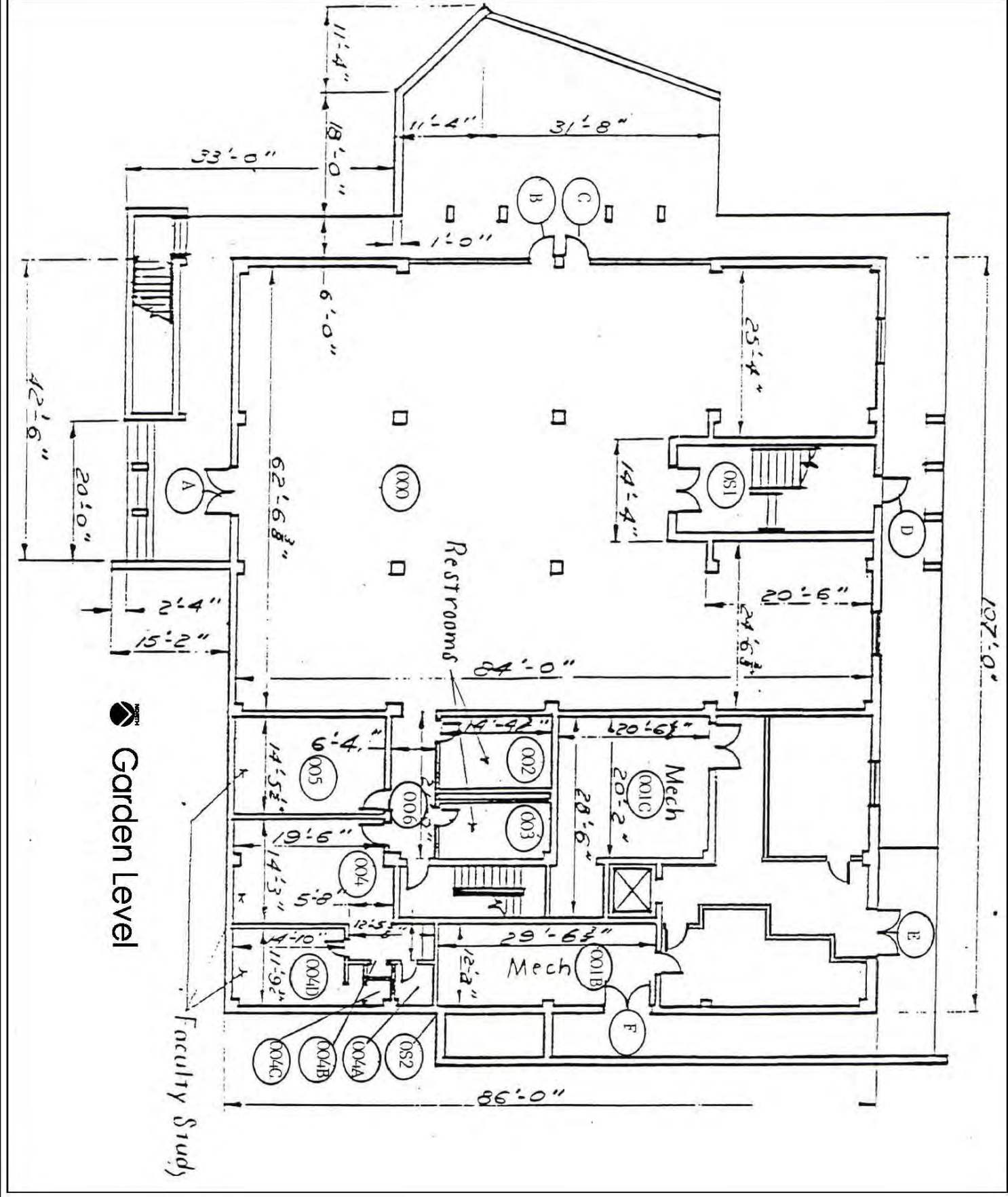
www.emporia.edu

SHEET:

A-000

PROJ. NO: 00-00

ISSUED 07/22/2005

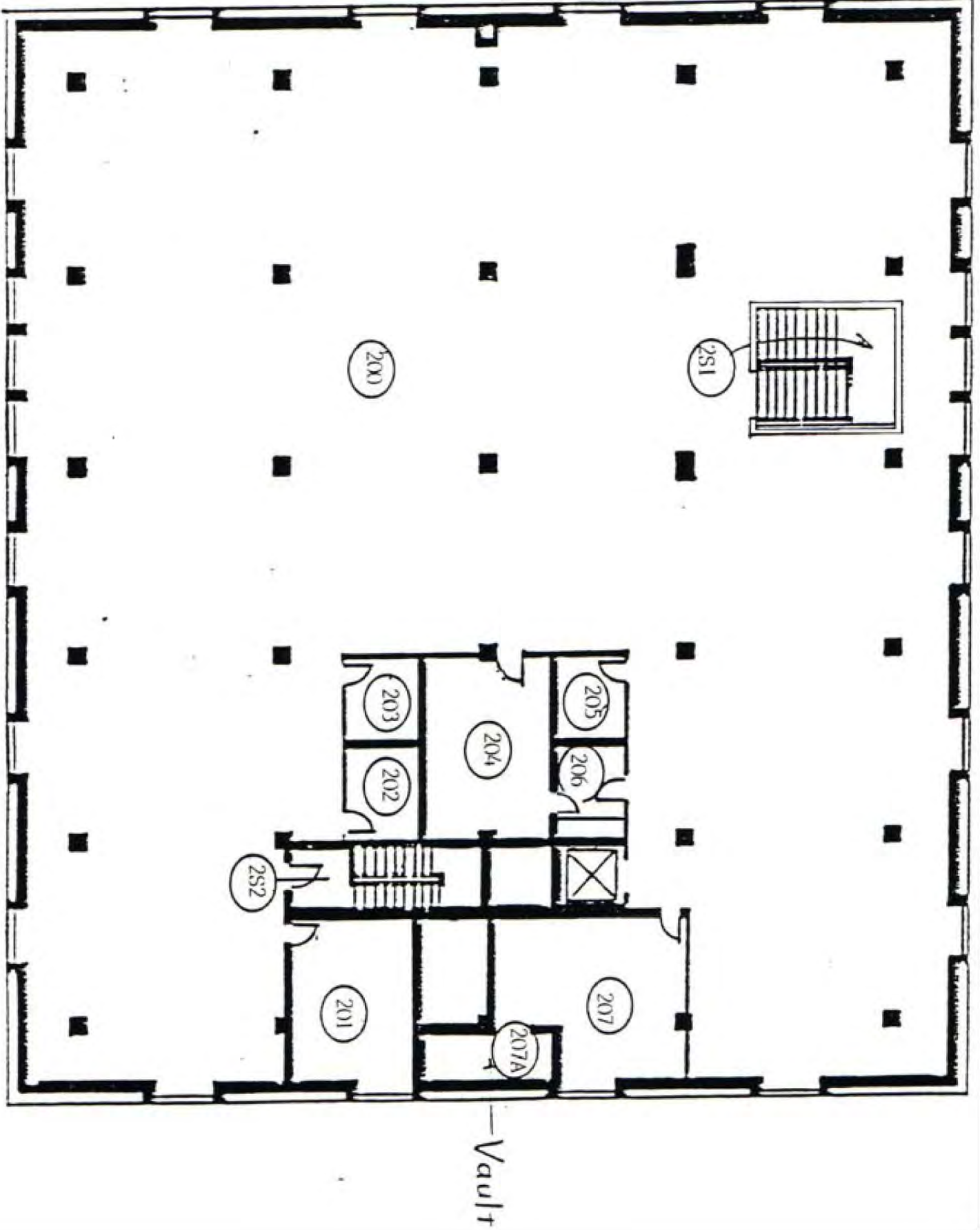


 Garden Level

Faculty Study



Second Floor Plan



Emporia State University

Hall of Fame

Second Floor Plan

1200 Commercial St., Emporia, Kansas 66801
tel. 620-341-5331, fax 620-341-5094

www.emporia.edu

PROJ. NO: 00-00

ISSUED 07/22/2005

SHEET:

A-000



1" = 80'

NATIONAL TEACHERS HALL OF FAME
1320 C OF E DRIVE

EGIS
EMPORIA GIS

